

Piro Collar PC

**60 MM AND HIGHER FIREPROOF COLLARS FOR FIRE PROTECTION:
PLASTIC PIPES, INSULATED METAL PIPES, CABLES AND CABLE BUNDLES**

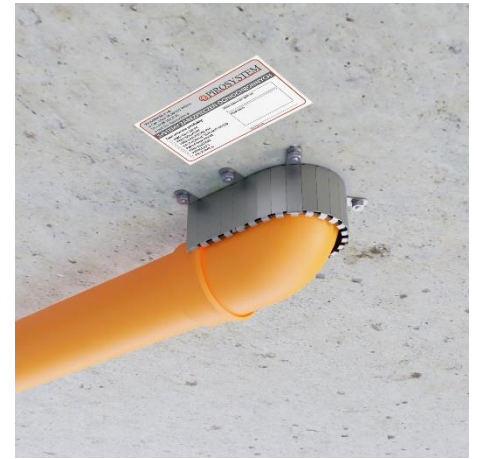
PRODUCT OFFICIAL DOCUMENTS	
European Technical Approval:	ETA-17/1063
Certificate of Constancy of Performance:	1488-CPR-0725/W
National Declaration of Performance:	PIRO/08-2018-09-10

PRODUCT TECHNICAL DATA	
Fire resistance class:	up to EI 180 C/U, U/C
Reaction to fire:	B-s2, d0
Color:	silver
Environment class:	Z1, Z2
Storage temperature range:	from +5°C to +30°C
Shelf life:	no limit, no longer than 24 months
Packaging:	1 piece



60 MM SMOOTH COVER

60 MM SEGMENT COVER



TECHNICAL DESCRIPTION:

Piro Collar PC fireproof collar is a metal cylindrical flexible clamping ring with an intumescent insert inside. Piro Collar PC is mounted on pipes or cables - cylindrical shape or on pipe elbows - U-shape. Depending on the assembly techniques, Piro Collar PC have steel covers: Smooth - cover made of continuous sheet steel with a height of 60 mm, Slim - cover made of continuous sheet steel with a height of 30 mm collar ready for assembly, Segment - segmental sheet steel cover with a height of 60 mm or 30 mm, the collar requires self-assembly. The intumescent insert consists of one or more layers of tape. Under fire conditions, the intumescent insert increases its volume and seals the penetration. The size of the intumescent insert depends on the pipe diameter and its intended use. The steel cover is equipped with a clamp, used to fasten the collar and stabilize it on the pipe, and with mounting brackets through which expansion anchor bolts are led, fixing fireproof collar to the partition. Fireproof collar is delivered as a ready-made product or in the form of an assembly set for self-preparation and assembly during work on the site. Fireproof collars can be 30, 60, 180 mm high. Piro Collar PC with a height of 30 mm, with a continuous cover, with a diameter of up to 160 mm, can be used interchangeably with collars with a height of 60 mm and a diameter of up to 160 mm. Piro Collar PC with a height of 30 mm, with a segmented cover, with a diameter of up to 110 mm, can be used interchangeably with collars with a height of 60 mm and a diameter of up to 110 mm.

INTENDED USE:

Piro Collar PC fireproof collar is a product intended for fireproof sealing of service penetrations and mixed penetrations in walls and floors of plastic pipes without or with FEF or PE foam insulation, metal pipes insulated with FEF or PE foam, electric cables. The possible fire resistance class ranges from EI 30 to EI 180. With the use of Piro Collar PC fireproof collars, it is possible to seal single pipes or pipe bundles, pipes in groups of e.g. 4 pieces, cable bundles, pipe bends that are mounted just below the floor. The necessary information can be found in the ETA. Good fireproof properties make Piro Collar PC applicable for sealing pipes with particularly large diameters and where large thicknesses of flammable insulation on steel pipes are required. The product is intended for professional use.

TECHNICAL CHARACTERISTICS OF PIRO COLLAR PC

PIPE DIAMETER (MM)	COLLAR TYPE	COLLAR OUTER DIAMETER (MM)	DISTANCE OF FASTENING ELEMENTS FROM THE CENTER OF THE COLLAR (MM)	NUMBER OF FASTENING ELEMENTS	DIAMETER AND LENGTH OF EXPANSION ANCHOR BOLT
25	PC-25	38	37	2	M6x60
32	PC-32	41	40	2	M6x60
40	PC-40	52	44	2	M6x60
48	PC-48	59	49	2	M6x60
55	PC-55	74	53	3	M6x60
68	PC-68	84	59	3	M8x80
82	PC-82	100	67	3	M8x80
90	PC-90	117	73	4	M8x80
110	PC-110	134	83	4	M8x80
125	PC-125	148	95	4	M8x80
135	PC-135	158	101	4	M8x80
160	PC-160	200	112	6	M8x80
200	PC-200	255	140	7	M8x80
250	PC-250	305	171	8	M8x80
315	PC-315	345	208	9	M8x80
350	PC-350	355	225	9	M8x80
400	PC-400	442	249	9	M8x80

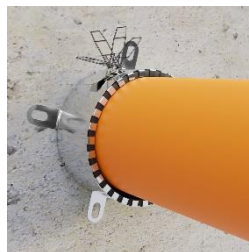
INSTALLATION OF PIRO COLLAR PC ON PLASTIC PIPE



Fill the space between the pipe wall and the aperture tightly. Use cement mortar. Double check that the area around the pipe is flat and free of irregularities, if necessary, flatten it using Piro Coat A



Remove the cotter pin securing the collar and place the fire collar on the pipe



Pull the securing pin of the clamping buckle on the other end of the fireproof collar and fold it 180 ° backwards so that the collar locks firmly on the pipe



Attach the collar to the wall with expansion anchor bolts



Mark the completed penetration seal with the label attached to the collar. Mark **Piro Collar PC** fireproof collar on the label, enter the date and the name

TECHNICAL DATA FOR ASSEMBLING O-SHAPED PIRO COLLAR PC WITH THE SEGMENT COVER

PIRO COLLAR PC DIAMETER	MOUNTING SET	NUMBER OF SEGMENTS REQUIRED TO ASSEMBLY THE COLLAR	THE LENGTH OF THE INTUMESCENT INSERT TO BE CUT OFF	NUMBER OF LAYERS OF 6.5 MM INTUMESCENT INSERT	NUMBER OF FASTENING ELEMENTS	SEQUENTIAL NUMBERS OF THE COVER SEGMENTS ON WHICH THE MOUNTING ELEMENTS SHOULD BE PLACED
25 mm	PC L 110	8	95 mm	1	2	2 and 6
32 mm	PC L 110	9	122 mm	1	2	2 and 6
40 mm	PC L 110	11	159 mm	1	2	2 and 7
50 mm	PC L 110	12	180 mm	1	3	2, 6 and 10
68 mm	PC L 110	16	237 mm	1	3	3, 9 and 14
82 mm	PC L 110	19	275 mm	1	3	4, 10 and 16
90 mm	PC L 110	20	301 mm	1	3	5, 10 and 16
110 mm	PC L 110	24	369 mm	1	4	2, 8, 14 and 20
PIRO COLLAR PC DIAMETER	MOUNTING SET	NUMBER OF SEGMENTS REQUIRED TO ASSEMBLY THE COLLAR	THE LENGTH OF THE INTUMESCENT INSERT TO BE CUT OFF	NUMBER OF LAYERS OF 4 MM INTUMESCENT INSERT	NUMBER OF FASTENING ELEMENTS	SEQUENTIAL NUMBERS OF THE COVER SEGMENTS ON WHICH THE MOUNTING ELEMENTS SHOULD BE PLACED
125 mm	PC L 200	31	1768 mm	4	4	2, 10, 18 and 26
135 mm	PC L 200	33	1909 mm	4	5	2, 9, 16, 23 and 30
160 mm	PC L 200	38	2239 mm	4	6	2, 8, 15, 21, 27 and 34
180 mm	PC L 200	41	2517 mm	4	7	4, 10, 16, 22, 28, 34 and 40
200 mm	PC L 200	45	2730 mm	4	7	4, 10, 17, 24, 31, 37 and 43

For insulated pipes, always use Piro Collar PC with a diameter greater or equal to the outer diameter of the insulation.
 For metal pipes, the minimum thickness of FEF insulation is 10 mm and the maximum thickness is 50 mm.

INSTALLATION OF PIRO COLLAR PC WITH THE SEGMENT COVER ON PLASTIC PIPE



Fill the space between the pipe wall and the aperture tightly. Use cement mortar. Double check that the area around the pipe is flat and free of irregularities, if necessary, flatten it using Piro Coat A



Place the fire collar on the pipe



Pull the securing pin of the clamping buckle through the securing slot on the other end of the fireproof collar and fold it 180 ° backwards so that the collar locks firmly on the pipe



Attach the collar to the wall with expansion anchor bolts



Mark the completed penetration seal with the label attached to the collar. Mark **Piro Collar PC** fireproof collar on the label, enter the date and the name

TECHNICAL DATA FOR ASSEMBLING U-SHAPED PIRO COLLAR PC WITH THE SEGMENT COVER

PIRO COLLAR PC DIAMETER	MOUNTING SET	NUMBER OF SEGMENTS REQUIRED TO ASSEMBLY THE COLLAR	THE LENGTH OF THE INTUMESCENT INSERT TO BE CUT OFF	NUMBER OF LAYERS OF 6.5 MM INTUMESCENT INSERT	NUMBER OF FASTENING ELEMENTS	SEQUENTIAL NUMBERS OF THE COVER SEGMENTS ON WHICH THE MOUNTING ELEMENTS SHOULD BE PLACED
25 mm	PC L 110	8	131 mm	1	3	1, 4 and 8
32 mm	PC L 110	9	153 mm	1	3	1, 5 and 9
40 mm	PC L 110	11	179 mm	1	3	1, 6 and 11
50 mm	PC L 110	12	198 mm	1	3	1, 6 and 12
68 mm	PC L 110	16	266 mm	1	3	1, 8 and 16
82 mm	PC L 110	19	310 mm	1	3	1, 10 and 19
90 mm	PC L 110	20	335 mm	1	3	1, 10 and 20
110 mm	PC L 110	24	397 mm	1	4	1, 9, 16 and 24
PIRO COLLAR PC DIAMETER	MOUNTING SET	NUMBER OF SEGMENTS REQUIRED TO ASSEMBLY THE COLLAR	THE LENGTH OF THE INTUMESCENT INSERT TO BE CUT OFF	NUMBER OF LAYERS OF 4 MM INTUMESCENT INSERT	NUMBER OF FASTENING ELEMENTS	SEQUENTIAL NUMBERS OF THE COVER SEGMENTS ON WHICH THE MOUNTING ELEMENTS SHOULD BE PLACED
125 mm	PC L 200	28	442 + 429 + 412 + 397 mm*	4	4	1, 10, 18 and 32
135 mm	PC L 200	30	485 + 470 + 457 + 442 mm*	4	5	1, 9, 16, 23 and 34
160 mm	PC L 200	34	559 + 545 + 534 + 519 mm*	4	6	1, 8, 15, 21, 27 and 38

*For collars in the range from 135 to 160 mm, the values of the length of the intumescent insert are given in the following format: first layer length + second layer length + third layer length + fourth layer length

INSTALLATION OF U-SHAPED PIRO COLLAR PC WITH THE SEGMENT COVER ON PLASTIC PIPE ELBOW



Fill the space between the pipe wall and the aperture tightly. Use cement mortar. Double check that the area around the pipe is flat and free of irregularities, if necessary, flatten it using Piro Coat A



Place the fire collar on the pipe



Drill holes for expansion anchor bolts in the partition



Place expansion anchor bolts in the drilled holes and attach the Piro Collar PC to the partition



Mark the completed penetration seal with the label attached to the collar. Mark Piro Collar PC fireproof collar on the label, enter the date and the name

Health and safety recommendations:

The product is intended for use by professional companies in industrial conditions. Work related to the installation of the product should be carried out in accordance with the applicable health and safety and environmental protection regulations. Before starting work with the product, read the Product Safety Data Sheet.

Version 05.2022 replaces 06.2018

The above information is based on our current knowledge and experience. We provide them in good faith. However, due to the variety of methods and conditions of application, they should be verified in specific applications. Therefore, the manufacturer's liability and obligations beyond the conditions set out in the applicable standard are excluded.