

Piro Wrap PW

**FIREPROOF INTUMESCENT WRAP FOR FIRE PROTECTION:
PLASTIC PIPES WITHOUT INSULATION**

PRODUCT OFFICIAL DOCUMENTS

European Technical Approval:	ETA-17/1064
Certificate of Constancy of Performance:	1488-CPR-0725/W
Hygienic certificate:	BK/B/0178/01/2019
European Declaration of Performance:	PIRO/07-2018-09-10

PRODUCT TECHNICAL DATA

Fire resistance class:	up to EI 120 C/U, U/C
Reaction to fire:	B-s2, d0
Color:	black
Environment class:	Z1, Z2
Storage temperature range:	from +5°C to +30°C
Shelf life:	no limit, no longer than 24 months
Packaging:	1 piece
Wrap types:	PW-55 PW -82 PW -90 PW-110 PW-125 PW-160



TECHNICAL DESCRIPTION:

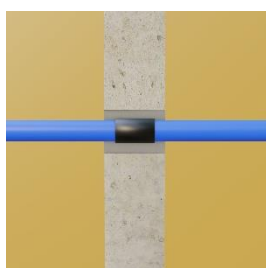
Piro Wrap PW fireproof wrap is a polymer wrap with an admixture of graphite and other components that make the assembly smooth and flexible, and under the influence of high temperature, it increases its volume, closing the hole with the pipe or cable on which it is wound. This fire-resistant wrap has a rectangular shape and is manufactured in several dimensions of the insert thickness and 60 mm or 100 mm width. Piro Wrap PW fireproof wraps are delivered as ready-made products. They consist of one or more layers of intumescent inserts of a fireproof wrap, placed in a closed material made of PVC foil or similar material. At one end of the bag there is an adhesive tape with a tab used to fix the wrap on the pipe. Piro Wrap PW fireproof wrap should be wrapped around the pipe to be protected, and if necessary, it can be cut to the required length. Fireproof wrap should be placed in the opening, inside the partition.

INTENDED USE:

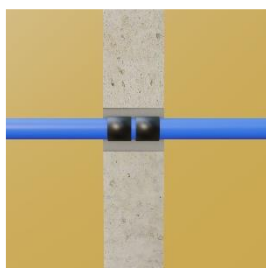
Piro Wrap PW fireproof wrap is a technical product interchangeable with Multitube, intended for sealing and stopping fire in service penetrations of plastic pipes with a diameter up to 160 mm. Fire resistance class from EI 30 to EI 120. For further information see ETA-17/1064. Its advantage is individual adjustment to the pipe diameter without the need for additional measuring work.

INSTALLATION DATA

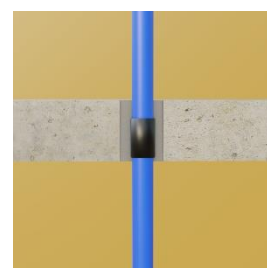
Piro Wrap PW fireproof wrap is a variation of the Multitube fireproof tape, just like Multitube fireproof tape (ETA-17/1064), it is installed inside the partition. The location of the fire-resistant wrap in the partition is shown in Figure 1,2,3. **Piro Wrap PW** fireproof wrap is a ready-to-use product, the intumescent insert cut to the diameter of the pipe is inside a foil material, which is wrapped around the pipe. In order for the fire-resistant wrap to be installed before pouring the floor or building the wall, it should be fixed on the pipe in the same way as the Multitube fire-resistant tape, using an electrically clamped band or adhesive tape, which will securely fix the fire-resistant wrap on the pipe and prevent it from moving. **Piro Wrap PW** fireproof wrap does not require a supporting structure, therefore it can be mounted directly on the pipe at its destination. For pipes led in a shaft or in technical openings, the installation of a fireproof wrap should be performed before they are walled up. For drilled holes, **Piro Wrap PW** fireproof wrap should be wrapped and fastened around the pipe outside the opening and inserted into the opening in the partition. The fixation of the fireproof wrap on the pipe is made by means of an integrated self-adhesive element. mounting clearance (u = approx. 25 mm) obtained after drilling in the supporting structure in order to seal with **Piro Wrap PW** fireproof wrap is required due to the space required for installation (insertion of the fireproof wrap into the hole).



Fireproof intumescent wrap in one row placed in the wall



Fireproof intumescent wrap in two rows placed in the wall



Fireproof intumescent wrap placed in the floor

INSTALLATION OF PIRO WRAP PW FIREPROOF INTUMESCENT WRAP ON A PLASTIC PIPE



Read the pipe diameter from the Table in the Pirosystem catalog and select the appropriate type of **Piro Wrap PW** fireproof wrap



Wrap **Piro Wrap PW** around the pipe and secure it with the integrated adhesive



Slide the secured wrap into the partition. Location of the fireproof wrap inside the opening - central position along the wall axis or 15 ± 5 mm from the bottom of the floor



Fill the space between the pipe and the partition with cement mortar



Mark the penetration seal with the attached label, mark **Piro Wrap PW** fireproof wrap on it, enter the date and name

Health and safety recommendations:

The product is intended for use by professional companies in industrial conditions. Work related to the installation of the product should be carried out in accordance with the applicable health and safety and environmental protection regulations. Before starting work with the product, read the Product Safety Data Sheet.

Version 05.2022 replaces 01.2018

The above information is based on our current knowledge and experience. We provide them in good faith. However, due to the variety of methods and conditions of application, they should be verified in specific applications. Therefore, the manufacturer's liability and obligations beyond the conditions set out in the applicable standard are excluded.