

Piro MULTITUBE PM

**FIREPROOF INTUMESCENT TAPE FOR FIRE PROTECTION:
PLASTIC PIPES, METAL PIPES, INSULATED PIPES, CABLES AND CABLE BUNDLES**

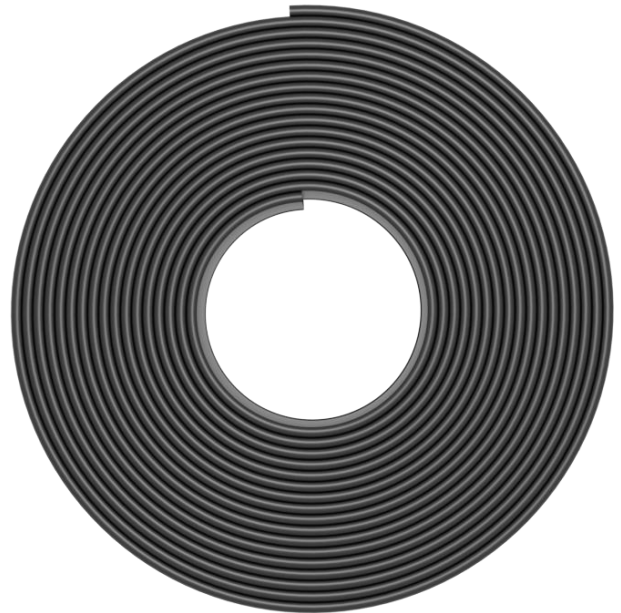
More information about the product can be found at:
<https://www.pirosystem.pl/piro-multitube-pm>

PRODUCT OFFICIAL DOCUMENTS

European Technical Approval:	ETA-17/1061
Certificate of Constancy of Performance:	1488-CPR-0727/W
Hygienic certificate:	BK/B/0178/01/2019
European Declaration of Performance:	PIRO/07-2018-09-10

PRODUCT TECHNICAL DATA

Fire resistance class:	up to EI 180 C/U, U/C, C/C
Reaction to fire:	B-s2, d0
Color:	dark graphite
Environment class:	Z2
Storage temperature range:	od +5°C do +30°C
Shelf life:	no limit, no longer than 24 months
Packaging:	rolka 5 m, 15 m, 30 m
Dimensions:	2,5 x 60 mm 4,0 x 60 mm 4,8 x 100 mm



TECHNICAL DESCRIPTION:

Piro Multitube PM fireproof intumescent tape is a polymer tape with an admixture of graphite and other components that make the assembly smooth and flexible, and under high temperature it increases its volume, closing the aperture with the pipe or cable on which it is wound. The cross-section tape has a rectangular shape and is manufactured in several sizes: 60 x 2.5 mm, 60 x 4 mm, 100 x 4.8 mm. The tape is rolled into a roll of various lengths, from 15 to 30 m. In the case of Piro Multitube PM fireproof intumescent tape, its unique feature is cross-section interchangeability. The strip cross-sections are interchangeable, which means that one cross-section can be replaced with another cross-section, the interchangeability of cross-sections is presented in the tables below. The fireproof intumescent tape should be cut off and adjusted to the outer circumference of the pipe, wrapped on the pipe and fixed with an electrically clamped band or a self-adhesive universal adhesive tape.

INTENDED USE:

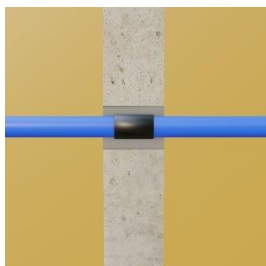
Piro Multitube PM fireproof intumescent tape is designed for sealing and stopping fire in service penetrations of plastic and metal pipes without or with flammable or non-flammable insulation, and cables penetrating walls or floors. Fire resistance class from EI 30 to EI 180. For further information see ETA-17/1061.

DANE MONTAŻOWE

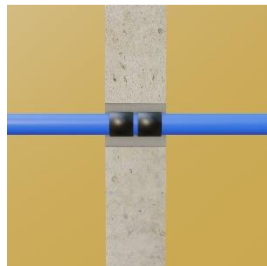
Piro Multitube PM fireproof intumescent tape does not require a supporting structure, therefore it can be mounted directly on the pipe at its destination. The tape is wrapped directly on the pipe or on the outside of the pipe insulation, depending on the type of pipe and type of insulation (for details see ETA-17/1061). For pipes running through the floor, wrapping with a fireproof tape can be performed both before pouring the floor or part of the floor with concrete mortar, and when pouring the floor or part of the floor with concrete mortar. For pipes running through a wall, wrapping with a fireproof intumescent tape can be done while the wall or part of it is built. For pipes led in a shaft or in technical openings, wrapping with a fireproof intumescent tape should be performed before walling them up. For drilled holes, Piro Multitube PM fireproof intumescent tape should be wrapped and fastened around the pipe outside the opening and inserted into the floor in the partition or placed on both sides of the bulkhead. Fixing the fire-resistant tape on the pipe can be done with an electrically clamped band or with a silver adhesive tape.

A mounting clearance ($u = \text{approx. } 25 \text{ mm}$) for penetration seals using Piro Multitube PM fireproof intumescent tape is only required due to the space required for its installation when drilling holes in existing partitions..

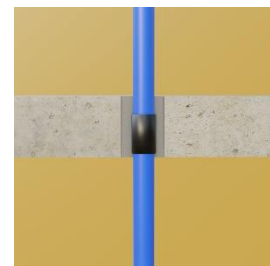
We install fireproof intumescent tapes in the walls along the axis of the wall or symmetrically on both sides. In floors, a fireproof intumescent tape should be installed $15 \pm 5 \text{ mm}$ from the bottom of the floor.



Fireproof intumescent tape in one row placed in the wall



Fireproof intumescent tape in two rows placed in the wall



Fireproof intumescent tape placed in the floor

INSTALLATION OF PIRO MULTITUBE PM FIREPROOF INTUMESCENT TAPE ON A PLASTIC PIPE


Read the length of Piro Multitube PM tape for a given pipe or bundle diameter from the Table in the Pirosystem catalog, measure it and cut it with a knife



Wrap the cut piece of tape around the pipe or bundle. Strictly stick to the number of wraps given in the Table in the Pirosystem catalog



Secure fireproof tape with electrically clamped band or adhesive tape and slide it inside the partition. Location of fireproof tape inside the opening - central position along the wall axis or $15 \pm 5 \text{ mm}$ from the bottom of the floor



Fill the space between the pipe and the partition with cement mortar. In the case of a plasterboard wall, fill the space with mineral wool with a minimum density of 60 kg/m^3 and fill with gypsum mortar with a thickness of min. 5 mm



Mark the penetration seal with the attached label, mark Piro Multitube PM fireproof intumescent tape on it, enter the date and the name

More information on applications and instructions can be found at:

<https://www.pirosystem.pl/piro-multitube-pm>

Health and safety recommendations:

The product is intended for use by professional companies in industrial conditions. Work related to the application of the product should be carried out in accordance with the applicable health and safety and environmental protection regulations. Before starting work with the product, read the Product Safety Data Sheet.

Version 05.2022 replaces 12.2017

The above information is based on our current knowledge and experience. We provide them in good faith. However, due to the variety of methods and conditions of application, they should be verified in specific applications. Therefore, the manufacturer's liability and obligations beyond the conditions set out in the applicable standard are excluded.