

Piro Collar PC L 200 assembly set

INSTALLATION INSTRUCTIONS

The Piro Collar PC L assembly set is intended for self-assembly of the Piro Collar PC at any place (e.g. on a construction site). The set includes: A) steel segment cover, B) intumescent insert, C) mounting elements, D) connecting elements clasp and slotter, labels. Mounting method: 1. Choose from Table 1 or 2 the size of Piro Collar PC to mount on the pipe. Calculate the number of segments, after counting cut off some of the segments from the cover. Calculate the number of mounting elements and mount them to the cover, mount the connecting elements at the ends of the cover. Then measure and cut the intumescent insert and wrap around the pipe to get four layers. Apply on the wrapped intumescent insert previously prepared segment cover. Mount the collar with steel bolts to the partition. After assembly, mark the finished collar with a label and attach it to the partition. Use a U-shaped collar to seal pipe elbows. One Piro Collar PC L set can be used to make Piro Collar PC with dimensions defined in Table 1 or Table 2, other dimensions besides those given in Tables 1, 2 are possible if they meet the requirements of Piro Collar PC with 60 mm height.



PIRO COLLAR PC 200 – O-SHAPED - INSTRUCTION

1

A

B

C

D

1 Elements of the set:
A Steel segment cover - 2m
B Intumescent insert - 7m
C Mounting elements - 18 pieces
D Connecting elements: clasp + slotter - 3 pieces

2

A

B

C

D

2 Steel segment cover:
A Read the number of segments for the diameter of the collar from the table below
B Unfold it
C Count off the number of segments
D Break off a fragment of the tape with the number of segments

3

A

B

C

D

3 Mounting elements:
A Read from the table the number of mounting elements for the diameter of the collar
B Place the mounting elements on the cover segments specified in the table, the first segment corresponds to the fastening buckle
C Use pliers to bend the ends of the mounting elements
D All mounting elements should be installed according to the guidelines in the table

4

A

B

C

D

4 Installation of closing elements:
A Choose from the set one connecting element clasp and slotter
B, C Put the fastening clasp on the first segment of the cover and put the slotter on the last segment of the cover
D Connecting elements should be placed on the reverse side of the cover than fastening elements. Use pliers to bend the ends of the elements

5

A

B

C

D

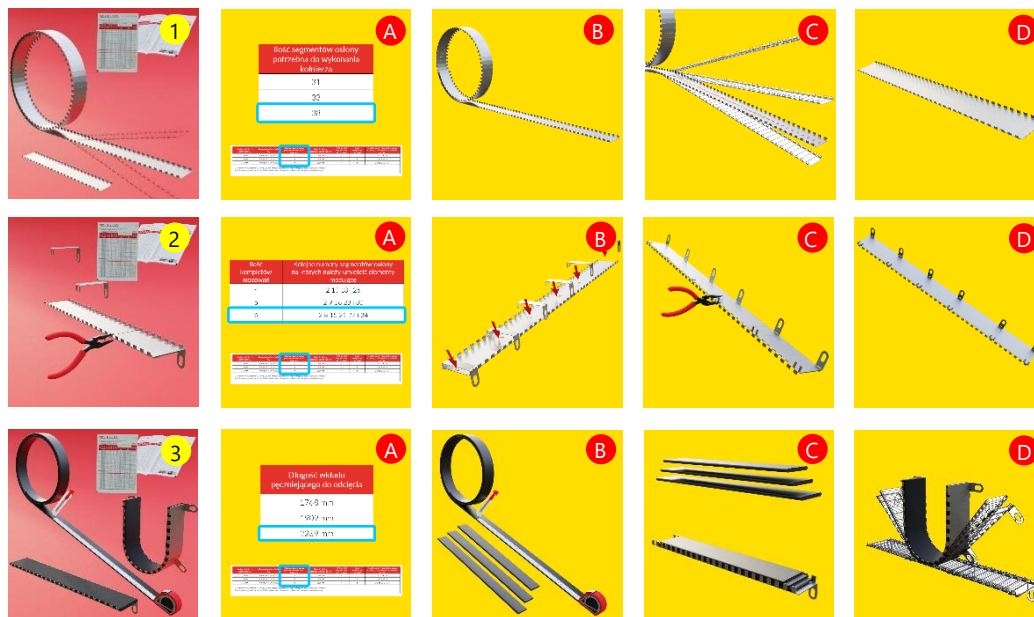
5 Installation of the intumescent insert
A Read the length of the intumescent insert from the table below
B Unfold the intumescent insert measure length given in the table and cut with a knife
C Wrap the intumescent insert four times around the pipe
D Put the cover on the wrapped insert and then Piro Collar PC is created

Piro Collar PC diameter	Type of Piro Collar PC L	The length of the segment cover needed to make the collar	The length of the intumescent insert to be cut off	Number of wraps with the intumescent insert	Number of mounting elements	Consecutive numbers of cover segments where mounting elements should be placed
90 mm	Piro Collar PCL 200	24	1420 mm	4	4	3, 5, 15, 21
110 mm	Piro Collar PCL 200	28	1687 mm	4	4	3, 10, 17, 24
125 mm	Piro Collar PCL 200	30	1823mm	4	4	3, 10, 17, 24
135 mm	Piro Collar PCL 200	32	1951mm	4	5	3, 9, 15, 21, 27
160 mm	Piro Collar PCL 200	37	2290mm	4	6	3, 9, 15, 21, 27, 33
180 mm	Piro Collar PCL 200	41	2539mm	4	6	3, 9, 15, 21, 27, 33
200 mm	Piro Collar PCL 200	44	2765mm	4	7	3, 9, 15, 21, 27, 33, 39

For insulated pipes, always use a collar with a diameter greater or equal to the outer diameter of the pipe insulation.
 For non-flammable pipes, the minimum insulation thickness of FEF is 10 mm and the maximum is 50 mm.

TABLE 1 - PIRO COLLAR PC – O-SHAPED TECHNICAL DATA FOR ASSEMBLY

PIRO COLLAR PC – U-SHAPED - INSTRUCTION:



1 Steel segment cover:
A Read the number of segments for the diameter of the collar from the table below
B Unfold it
C Count off the number of segments
D Break off a fragment of the tape with the number of segments

2 Mounting elements:
A Read from the table the number of mounting elements for the diameter of the collar
B Install the mounting elements on the tape segments
C Use pliers to bend mounting elements
D All mounting elements should be installed according to the guidelines in the table

3 Installation of the intumescent insert
A Read the length of the intumescent insert from the table below
B Unfold the intumescent insert measure length given in the table and cut with a knife
C Place the intumescent insert in the previously prepared segment cover
D Bend the cover together with the intumescent insert and U-shaped Piro Collar PC is created

Piro Collar PC diameter	Type of Piro Collar PC L	The length of the segment cover needed to make the collar	The length of the intumescent insert to be cut off	Number of layers of 6.5 mm intumescent insert	Number of mounting elements	Consecutive numbers of cover segments where mounting elements should be placed
125 mm	Piro Collar PC L 200	28	442 + 429 + 412 + 397 mm*	4	4	1 10 18 ; 32
135 mm	Piro Collar PC L 200	30	485 + 470 + 457 + 442 mm*	4	5	1 9 16 23 ; 34
160 mm	Piro Collar PC L 200	34	559 + 545 + 534 + 519 mm*	4	6	1 8 15 21 27 ; 38

* For collars in the range from 135 to 160 mm, the length values of the intumescent insert have been given in the format: first layer length + second layer length + third layer length + fourth layer length

TABLE 2 - PIRO COLLAR PC - U-SHAPED TECHNICAL DATA FOR ASSEMBLY

PIRO COLLAR PC O-SHAPED - INSTALLATION ON PIPE:



1. Fill the space between the pipe wall and the partition tightly. Use mineral wool with a density of min. 60 kg/m³ or cement mortar.
2. Place Piro Collar PC on the pipe.
3. Pull the pin of the fastening clamp through the slot at the other end of the collar and wrap it 180° backwards so that the collar is firmly closed on the pipe.
4. Attach the collar to the wall or floor with steel mounting bolts or special metal plasterboard fasteners. Do not use bolts containing plastic parts.
5. Mark the penetration with the label attached to the set. Mark Piro Collar PC on it, write date and your name.

PIRO COLLAR PC U-SHAPED - INSTALLATION ON PIPE ELBOW:



1. Fill the space between the pipe wall and the partition tightly. Use mineral wool with a density of min. 60 kg/m³ or cement mortar.
2. Place Piro Collar PC on the pipe.
3. Drill holes for bolts in partition.
4. Place bolts in the drilled holes and attach the collar to the partition.
5. Mark the penetration with the label attached to the set. Mark Piro Collar PC on it, write date and your name.