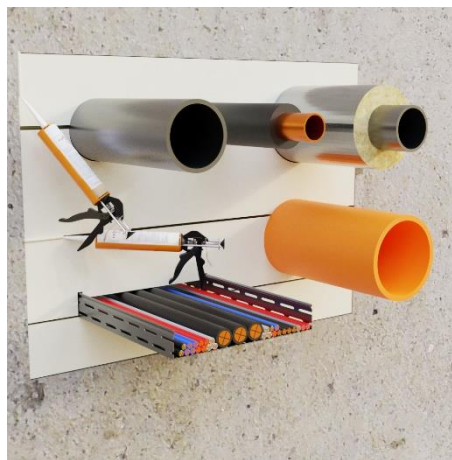


*Flame*  
**Cabel®**  
Pasta A

**FLAME CABEL A PASTE PAINTED BOARD FOR FIRE PROTECTION:  
MIXED PENETRATIONS SEALS AND EXPANSION JOINTS**

More information about the product can be found at:  
<https://en.carbolinepolska.pl/flame-cabel-pasta-a-plyta-malowana>

PRODUCT TECHNICAL DATA	
Surface color:	creamy white
Mineral wool density:	150 kg/m <sup>3</sup>
Storage temperature range:	from +5°C to +30°C
Shelf life:	24 months
Coating thickness of Flame Cabel Pasta A:	1,6 mm
Board dimensions (height, thickness, thickness):	1000 mm x 600 mm x 51,6 mm
Packaging:	2 boards



**TECHNICAL DESCRIPTION:**

Flame Cabel A Paste painted mineral wool board is a board of mineral wool with a density of 150 kg/m<sup>3</sup> and 50 mm thick with a 1.6 mm layer of Flame Cabel A Paste, which is an aqueous dispersion of a synthetic resin and pigments. Flame Cabel A Paste layer is completely non-flammable.

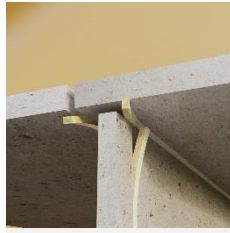
**INTENDED USE:**

Flame Cabel A Paste mineral wool board is used in the construction of mixed penetrations of certain types of plastic, metal pipes as well as cables through flexible and rigid walls and floors. It is also used to fill expansion gaps in walls and fire floors. In addition, it can be a fireproof protection for gypsum plasterboards or a filling between them in order to increase the fire resistance of a partition made of these boards. Flame Cabel A Paste layer on mineral wool board has very good endothermic properties, it strongly cools the surfaces when heated with the flame and blocks its spread under fire conditions. The main advantage of Flame Cabel A Paste A Painted Board, both when filling mixed penetrations and expansion joints, is the speed and simplicity of installation. The product is designed in accordance with ETA-16/0732 and ETA-15/0853

**INSTALLATION OF FLAME CABEL A PASTE PAINTED BOARD IN EXPANSION JOINTS**



Use a knife to cut a strip of Flame Cabel A Paste Painted Board with a width equal to the width of the expansion joint



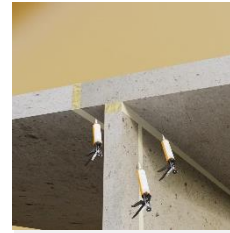
Previously cut off strip place in expansion joint so that the top layer of FlameCabel A Paste is together with partition surface



If the partition is thicker than 100 mm, then the space between the applied Flame Cabel A Paste Painted Board strips should be filled with any mineral wool



If the protection must be made on both sides, place the strip of Flame Cabel A Paste Painted Board in the expansion joint on the opposite side of the partition



The gaps between Flame Cabel A Paste Painted Boards should be sealed with Flame Cabel A Paste in cartridge

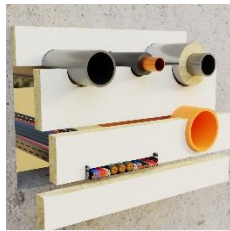


View of a properly sealed expansion joint on one and both sides. In this way, you can seal horizontal and vertical joints both in walls and floors

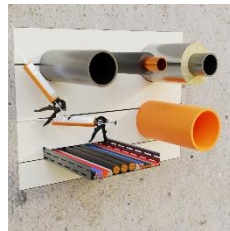
**INSTALLATION OF FLAME CABEL A PASTE PAINTED BOARD IN MIXED PENETRATIONS**



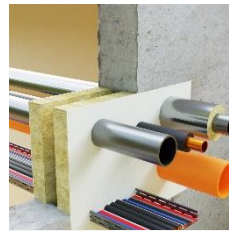
Cut the correct shape with a knife to fit Flame Cabel A Paste Painted Board for pipes or cable bundles



The fragments of Flame Cabel A Paste Painted Board cut this way place in the partition so that the painted layer of Flame Cabel A Paste is together with the partition surface



Use the Flame Cabel A Paste in the cartridge to seal the gaps between the arranged fragments of Flame Cabel A Paste Painted Board and the places where the board and partition meet



Sealing of the mixed penetration should be made on both sides of the partition both in wall and in floor



Seal pipes and cables in accordance with the instructions in the information leaflet or product catalog



Mark the penetration with the attached certificate, mark fireproof paste Flame Cabel A Paste on it, enter the date and name

More information on applications and instructions can be found at:

<https://en.carbolinepolska.pl/flame-cabel-pasta-a-plyta-malowana>

**Health and safety recommendations:**

The product is intended for use by professional companies in industrial conditions. Work related to the application of the product should be carried out in accordance with the applicable health and safety and environmental protection regulations. Before starting work with the product, read the Product Safety Data Sheet.

**Version 03.2022 replaces 06.2021**

The above information is based on our current knowledge and experience. We provide them in good faith. However, due to the variety of methods and conditions of application, they should be verified in specific applications. Therefore, the manufacturer's liability and obligations beyond the conditions set out in the applicable standard are excluded.